

OPTICAL SCAN VOTING INSTRUCTIONS

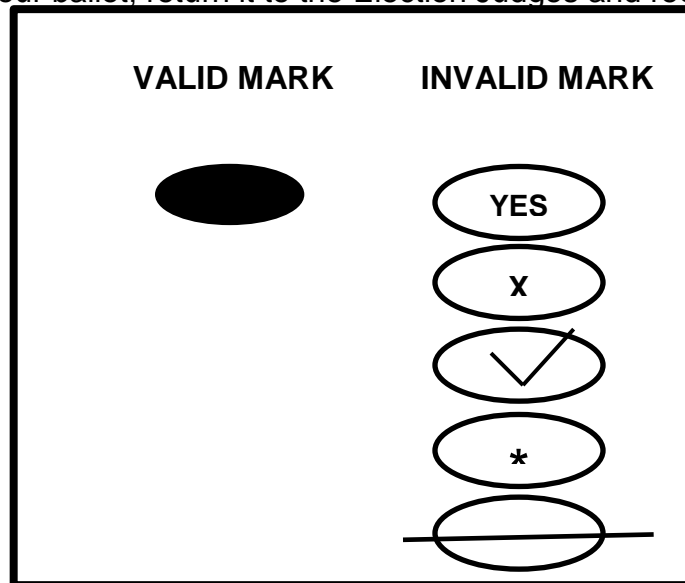
TO CORRECTLY MARK YOUR BALLOT

1. Use only the marking pen provided to vote your ballot.
2. Carefully read how many candidates you may vote for in each office.
3. Completely fill in the pre-printed oval opposite the candidate(s)/proposition(s) of your choice.
4. If the ballot is two-sided, be sure to vote both sides if you choose to do so.
5. If you wish to vote for a person whose name is not on the ballot you may write or print the name of a candidate in the blank space below the office. Completely fill in the oval opposite the name with the pen provided.
6. **Write-in votes are counted only for those candidates who file a declaration of intent to be a write-in candidate.** If you wish to see the list of write-in candidates, please contact one of the Election Judges in the polling place.


IMPORTANT


You cannot erase or cross out. Any mark placed anywhere on a ballot which serves to identify and therefore distinguish it from other ballots **shall not be counted**. A letter of the alphabet, an "X", a check mark or other symbol are examples of an identifying mark.


If you spoil your ballot, return it to the Election Judges and request a new one.





FOR PRESIDENT AND VICE
PRESIDENT OF THE UNITED
STATES
(Vote for One Group)

 **Republican**
REPPRES
REPPRESVP

 **Democratic**
DEMPRES
DEMPRESVP

 **Libertarian**
LIBERPRES
LIBPRESVP

 **Independent**
INDPRES
INDPRESVP

 WRITE-IN _____

ASSISTANCE

1. Any voter may use the Voter Assistance Terminal to complete their ballot. The Voter Assistance Terminal is a ballot marking system designed to provide privacy and accessibility to voters who are blind, vision-impaired, or have a disability or condition that would make it difficult or impossible to mark their own ballot with a pen.
2. If you prefer and you declare upon oath that you require assistance by reason of blindness, physical disability or inability to read, write, or speak the English language, you may, upon request, be assisted by two Judges of different political parties or by a relative or friend of your selection other than your employer or an agent of that employer or officer or agent of your union.
3. Intoxication will not be regarded as a physical disability, and if intoxicated, you will receive no assistance in marking your ballot.
4. If you require additional assistance, please contact one of the Election Judges in the polling place.

ATTENTION!
Ballot may be continued on the back side. Please turn the ballot over and vote the back side if necessary.

