

CHAMPAIGN COUNTY

Voter's Guide

General Election November 4, 2008

Polls are open from 6am to 7pm

Voting Instructionspage 5

How Do I Register to
Vote?.....page 9

Election Judges
Needed.....page 7

Accessibility at the
Polls.....page 15

Candidates and Referenda for this
election.....page 18

Prepared and distributed by
Mark Shelden, Champaign County Clerk
1776 E. Washington, Urbana, IL 61802
www.champaigncountyclerk.com
(217) 384-3724





Mark Shelden
Champaign County Clerk
Champaign County, Illinois

1776 East Washington Street
Urbana, IL 61802

Email: mail@champaigncountyclerk.com
Website: www.champaigncountyclerk.com

Vital Statistics: (217) 384-3720
Elections: (217) 384-3724
Fax: (217) 384-1241
TTY: (217) 384-8601

September, 2008

Dear Voter,

In my eleven years as County Clerk, I've never seen an election generate such enthusiasm and interest. Please be one of the people who speaks out on Election Day by casting your ballot.

The voter guide once again is full of useful information. You will find lists of candidates, voting instructions, and information on additional ways in which you can get involved with elections. I encourage you to check out the Frequently Asked Questions page. It provides many helpful answers to questions you may have.

Also, please look at our website, www.champaigncountyclerk.com. Among other things, you can check your registration status and view your ballot there. The website is also the best place to confirm the location of your polling place. It also allows voters to find out who represents them and how to contact their elected officials. In addition, you can also request an absentee ballot through the website at www.champaigncountyclerk.com/elections/absentee.html. Because of the level of detail required on maps, we aren't able to provide them in this voter guide. Once again, the website provides the most accurate information regarding where to vote.

44 precincts share a polling place. In previous elections, voters needed to figure out which line to get in for their particular precinct. This election, and in the future, we will have all voters at the polling place go through a single line. This should speed up the process on election day and prevent confusion.

Please continue to look at our website as we have information about County Board activities as well as important information about other functions of our office. Additionally, our staff has been aggressively assembling a digital archive of Champaign County records. Much of that is available already and more will be arriving on line in the coming months.

As always, I am interested in your thoughts about how our office is run and what we can do to improve the election process. If you would like to offer suggestions, call or e-mail us at suggestions@champaigncountyclerk.com.

This is an important election for the entire county. Please take the time to vote on
November 4, 2008

Sincerely,

Mark Shelden

Mark Shelden
Champaign County Clerk

Table of Contents

Important Dates	4
Voting Instructions	5
Write-in Voting Instructions	5
Ensuring Integrity	6
Become An Election Judge	7
Student Election Judge Application	8
Voter Registration	9
Website	10
Voter Bill of Rights	11
Provisional Voting	12
First Time Voters	13
Absentee Voting	14
Accessibility	15
Early Voting	15
Frequently Asked Questions	16-17
Candidates	18-25
Referenda	26-29
Your Suggestions	29
List of Polling Places	30-31

Thank you for your support!

Many individuals and businesses in our community provide invaluable services during our elections. Without these services, we would not be able to run the smooth elections we are accustomed to in Champaign County. We would like to thank the 117 businesses, churches and schools who serve as polling places and training locations. Most deserving of our thanks are the over 600 election judges and counting center workers who put in long and late hours ensuring our democratic process. Even though they are paid for their time, their pay falls very short of compensating these people for the excellent job they do election after election.

Important Dates

Thursday, September 25, 2008	Absentee voting opens. First day voters may cast an absentee ballot in person in the County Clerk's Office or request an application for an absentee ballot by mail.
Saturday, October 4, 2008	County Clerk's Office open 9am-12pm for voter registration and change of address requests.
Tuesday, October 7, 2008	Last day to register to vote or change your address. Office hours are extended to 5pm.
Monday, October 13, 2008	First day for Early Voting. County Holiday. Office open 8am-4:30pm for Early Voting only.
Saturday, October 18, 2008	County Clerk's Office open 9am-12pm for Early Voting by personal appearance.
Sunday, October 19, 2008	County Clerk's Office open 9am-4pm for Early Voting.
Thursday, October 23, 2008	County Clerk's Office extended hours 4:30-7pm for Early Voting.
Saturday, October 25, 2008	County Clerk's Office open 9am-12pm for Early Voting.
Sunday, October 26, 2008	County Clerk's Office open 9am-12pm for Early Voting.
Tuesday, October 28, 2008	County Clerk's Office extended hours 4:30-7pm for Early Voting.
Thursday, October 30, 2008	Last day County Clerk's Office will accept an application for an absentee ballot by mail.
Saturday, November 1, 2008	County Clerk's Office open 8:30am-12pm for in-person absentee voting.
Monday, November 3, 2008	Last day to cast an absentee ballot in person at the County Clerk's Office. Office hours are extended to 5pm.



November 4, 2008
Election Day
Polling Places open
6:00 A.M. - 7:00 P.M.

Just Fill in the Oval

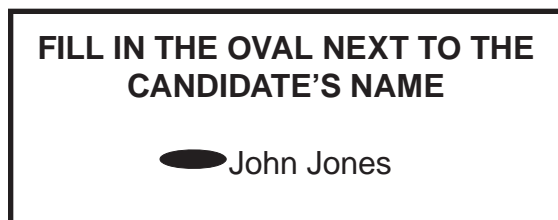
An Easy and Accurate Voting System

Receive Your Ballot

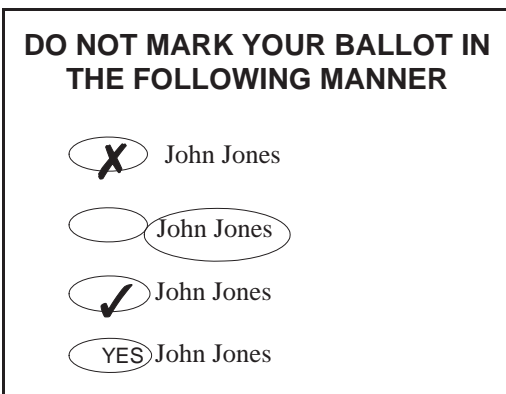
Enter the polling place and give your name and address to an Election Judge. Complete and sign an Application to Vote. Upon verification, the election judge will give you:

- a paper ballot
- a privacy cover
- a pen

Enter the Voting Booth and Mark Your Ballot



Enter the next available voting booth. To vote the optical scan ballot, completely fill in the oval to the left of the candidate or public question of your choice. Be sure to mark both sides of your ballot if needed. If you make a mistake marking your ballot, return it to an Election Judge to receive a new ballot.



Vote!

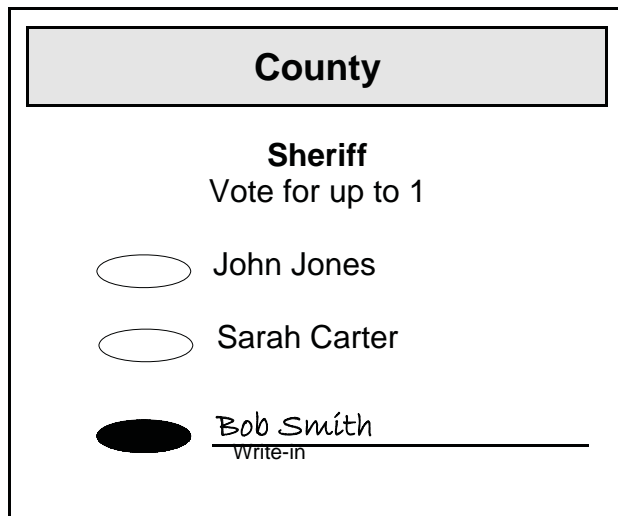
Cover your ballot with the privacy sleeve and insert the ballot into the ballot tabulator. The new Optical Scan System complies with the Help America Vote Act (HAVA) to provide voters an opportunity to check for and correct ballot errors

(for example, casting more votes for an office than allowed results in an overvote). If an error is detected, the system will gently beep and give you the option to accept the ballot as is (the overvoted office will not count) or you may return the ballot to an Election Judge and receive a new ballot.

- The ballot tabulator will notify you if you have over-voted an office, but it will not notify you if you have under-voted. Many voters intentionally skip offices for which they do not care to vote, but rarely intentionally vote for more candidates than allowed in any given office.
- The ballot tabulator will notify you if you have inserted a blank ballot or one that it perceives to be blank because it was not marked properly.

HOW TO CAST A WRITE-IN VOTE

If a voter wishes to vote for a person whose name is not on the ballot, the voter may write in the name of the candidate in the blank space below the office. Fill in the oval opposite the name with the black pen provided.



- ★ Write-in votes are counted only for those candidates who file a declaration of intent to be a write-in candidate.

Ensuring Integrity

In our first election with the new voting equipment, one issue that came up was the lack of a “receipt” given to voters on election day. I heard this question on election day, read comments about it on the County Clerk blog, and was asked about it at election judge schools.

Prior to the advent of purely electronic or touch screen voting systems, no one really cared about a “receipt”. Many systems never had anything at all (like lever systems) or had something that was not really a receipt. Some people seemed to classify the stub on your punch card ballot as a receipt. It had no information on it, and quite frankly, you could have grabbed a stub from any punch card in America and it would not be distinguishable from the one in Champaign County. I compare the punch card stub to a grocery sack. It might demonstrate that you were in the store, but it does nothing to prove that you bought anything.

The confusion seems to stem from the evolution of the debate about electronic voting. When electronic voting began, people were complaining about a lack of a paper trail. Quite simply, the integrity of the election was in the hands of computer programmers. Even extensive testing could fail to reveal the designs of a master programmer.

What most election integrity advocates wanted was a paper trail. They wanted votes to be cast on an actual piece of paper, much like punch card does, so that any programming manipulation could be counterbalanced by a hand count of ballots. The idea of a receipt for electronic voting is a half way solution to a problem. The paper trail, as exists with the system we have in Champaign County, is far more preferable than a “receipt.”

People have also suggested that they be provided a piece of paper showing how they voted. Once again, that might look good, but it would do nothing to prove that the computer is actually tallying the votes correctly. Additionally, that piece of paper would facilitate vote fraud in a way that the political machines could only dream of.

We had a recount of ballots in County Board District 9 for the March 2006 primary. The hand totals matched the computer count. This demonstrates clearly the value of having a paper trail as provided by the optical scan equipment. However, there is no guarantee in any election that a hand count will happen. As such, we have implemented a change to ensure a hand count of ballots.

State law currently requires that we retabulate 5% of the precincts after election day (that means six in Champaign County) and prior to the canvass of votes. The State Board of Elections randomly selects those precincts. When those six precincts are selected, representatives of the Democratic, Republican, and Green Parties run the ballots through a tabulator and compare results with those from election day. We randomly assigned two precincts to each of the three established political parties and asked them to select one race in each of those precincts to hand count. Then, we have a team of individuals from the parties conduct a hand count of ballots. With this policy, we have a guarantee of a hand count of ballots in each election that gives voters in Champaign County absolute confidence that the tabulating machines are actually counting the ballots in the same way that the ballots are being voted.

We are concerned about integrity as much as anyone. We will continue to look for ways to ensure the integrity of our system so that every voter can have confidence in our election results.

MAKE DEMOCRACY WORK!

BECOME AN ELECTION JUDGE

Election Judges help guarantee the rights of voters are protected on election day. This page details the qualifications necessary to become an election judge and also some of the important duties and responsibilities.

What are judges of election?

Judges of election are responsible for the administration of election procedures in the polling place on election day. They are in the position of ensuring that the election process is administered fairly and in accordance with our laws.

What are the qualifications necessary to be an election judge?

- Be a citizen of the United States.
- Be of good repute and character.
- Be able to speak, read and write the English language.
- Be of good understanding and capable.
- Not be an elected committeeman.
- Need to be registered to vote in the county.
- Each Election Judge is required to declare their party preference.

How are election judges trained?

Before each election several election judge training schools will be held. This course covers the duties and responsibilities of election judges and an examination which tests reading skills, ability to work with poll lists, ability to add and knowledge of election laws governing the operation of polling places is given every two

years. Judges who have attended and completed the class will receive \$120.00 for their duties on election day. Judges who have not attended and completed the class will receive \$75.00.

What are some of the duties of the judges of election?

- Open and close the polls;
- Be responsible for all election materials;
- Ensure that only qualified voters are permitted to vote;
- Give instructions in the method of voting;
- Give assistance to illiterate and physically disabled voters;
- Maintain order in the polling place;
- Tally the vote after the polls are closed; and to certify the election results in that precinct.

How may I become an election judge?

Contact the County Clerks Office by phone, email or complete and return the form below. Election judges are vital to the conduct of efficient and honest elections to which voters are entitled.

Call us at (217) 384-3724 or

Email us at mail@champaigncountyclerk.com or Complete the form below or on our website at www.champaigncountyclerk.com

Yes, I am interested in serving as an Election Judge:

Name _____

Phone number _____ Political Party _____

Return this to:

Mark Shelden

Champaign County Clerk

1776 E Washington

Urbana IL 61802

Email _____

STUDENT ELECTION JUDGE PROGRAM

Champaign County has a program just for high school juniors and seniors. Student Election Judges work with experienced Election Judges in precincts and they receive \$120.00 for the day. These students perform a great service while gaining a hands on experience in our democratic process. For more information, please contact the Champaign County Clerk's Office at 384-3724.

Mark Shelden
Champaign County Clerk
1776 E. Washington
Urbana, IL 61802
384-3724

STUDENT ELECTION JUDGE APPLICATION/NOMINATION FORM

High School Name: _____

Student Information

Name: _____ Telephone number: _____

Address: _____

City: _____ Zip Code: _____

E-Mail Address: _____ Cell Phone number: _____

Birth Date: _____ Social Security Number _____

Check one: I want to serve as a Democratic Judge

I want to serve as a Republican Judge

I will meet the following requirements to be eligible to participate in this program:

- ▶ **At least 16 years of age at the time of the election.**
- ▶ **U.S. Citizen at the time of the election.**
- ▶ **A high school junior or senior in good standing with a B average.**
- ▶ **Must attend an election judge training class.**

Signature of Student: _____ Date: _____

Signature of Parent/Guardian: _____ Date: _____

Signature of Principal: _____ Date: _____

*Student Judges must attend a training class. After submitting your application, please call 384-3724 to schedule a time.

Get Registered! How Do I Register?

Any person wishing to register to vote must be a U.S. citizen, 18 years of age at the time of the election and a resident of the election precinct in which they reside for 30 days or more prior to an election. Registration for the November 4, 2008 General Election closes October 7, 2008.

Once registered you will receive a voter card that will show the address of the precinct polling place you are assigned and the offices for which you can vote.

Voter registration is available at the Champaign County Clerk's Office, 1776 E. Washington, Urbana between the hours of 8:00am and 4:30pm, Monday-Friday.

Voter registration is also available at the the Driver's License Facilities in Champaign and Rantoul, and the voter registration kiosks located at the Round Barn IGA in Champaign and the Illini Union and at the Undergraduate Library on the campus of the University of Illinois. For more information, call the County Clerk's Office at 384-3724.

Extended Hours for County Clerk's Office

Saturday, Oct 4

9am-12N for voter registration and change of address.

Tuesday, Oct 7

Open until 5pm for voter registration and change of address.

Have you moved?

Change of Address

If you are a registered voter in Champaign County and have moved within Champaign County and have not yet notified our office, simply fill out the form below and return to: Champaign County Clerk, 1776 E Washington, Urbana, IL 61802 before October 7, 2008. A change of address is required in order to vote, unless you have moved 30 days prior to the election. If you have moved within 30 days of the election, you may vote in your old precinct by signing an affidavit.

Mark Shelden, Champaign County Clerk Change of Address for Voters Registered in Champaign County

Do not fill out this form unless you are **NOW REGISTERED IN CHAMPAIGN COUNTY**. A change of address within Champaign County must be received in the County Clerk's Office **by October 7, 2008**.

Date _____

Name _____

Old Voting Address _____

New Address _____

Birth date _____ Social Security No. _____

Home Phone No. _____

Signature _____

Return this form to: Mark Shelden
Champaign County Clerk
1776 E. Washington
Urbana, IL 61802

Visit Our Website

www.champaigncountyclerk.com

Check Your Voter Registration Status and View Your Sample Ballot

We offer the option to verify your voter registration status and address online. Simply enter your name, birth date, and the last four digits of your social security number. You will be able to view your voting districts, polling place, registration address, and your sample ballot as it will appear on Election Day. It will also inform you if you need to vote in person and present ID when voting.

Request an Absentee Ballot Application

An online form is available which allows registered voters to request an application for absentee ballot – www.champaigncountyclerk.com/elections/absentee.html

Update Your Voter Registration Address

You may download, print, complete, sign, and mail a change of address form to our office to update your voter registration address. We will then mail you a new Voter Identification Card. (The deadline to update your address is the Tuesday four weeks prior to the next election.)

Who Represents Me?

Our web site can assist in determining which government officials represent you. The site also lists government contact information ranging from U.S. Congress to Township Supervisors to City Clerks.

Locate Maps

We have many maps online including Legislative, County Board District, Precinct, City of Champaign Council Districts, City of Urbana Wards, and School Board Sub-Districts. We are not putting maps in the voter guide because of the difficulty in making accurate and readable maps.

View County Board Agendas, Minutes, Ordinances, and Resolutions

The Champaign County Board agendas, minutes, action reports, ordinances, and resolutions are offered online for visitors for viewing and printing.

Conduct a Property Tax Record Search

Searching for the tax rate or tax bill amount for a property? If you have the Property Identification Number (PIN) or the address for a property, you can view various tax information of a property.

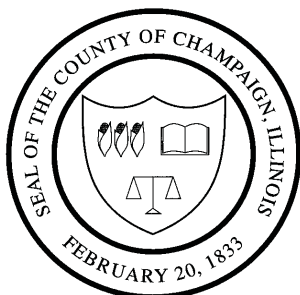
Order Copies of Birth, Marriage, and Death Certificates

For a \$1.75 convenience fee (charged by Illinois E-Pay), you may securely and conveniently order copies of vital records online including birth, marriage, and death certificates. (You may order vital records online provided that you are authorized to obtain the records.)

This 2008 Champaign County Voter Guide is also available online. You can view it at www.champaigncountyclerk.com/voterguide

VOTER BILL OF RIGHTS

1. Cast your ballot in a non-disruptive atmosphere free of interference.
2. Vote if you are in line by 7:00 p.m.
3. Be able to contact the County Clerk's Office if there are questions regarding your voter registration and cast a Provisional Ballot, if necessary.
4. Vote at your old polling place if you have moved within 30 days of the election.
5. Request assistance in voting, if needed.
6. Bring newspaper endorsements, sample ballots, or a voter guide into the voting booth.
7. Protect the secrecy of your ballot.
8. Receive a new ballot if you make a mistake or change your mind.
9. Screen your ballot after voting to ensure it is complete and correct.
10. Have your ballot counted fairly and impartially.



MARK SHELDEN
Champaign County Clerk



Provisional Voting

What procedures must I follow?

- Fill out and sign legal affidavit stating that you believe you are registered to vote and eligible to vote in this election. You will receive a copy of the affidavit.
- An election judge will note on the affidavit the reason(s) you were issued a provisional ballot.
- An election judge will issue you a provisional ballot.
- After voting your ballot, place the provisional ballot card inside the provisional ballot envelope, seal it and return it to the elections judge.

If you make a mistake, ask an election judge for a new ballot.

Why was I given a provisional ballot?

- Your name does not appear on the lists of registered voters for the precinct.
- Your voting status has been challenged by an election judge, poll-watcher or another voter and a majority of the election judges agree.
- A court order is issued instructing your polling place to remain open after 7pm (Everyone voting after 7pm must cast a provisional ballot).
- You were sent an absentee ballot, but wish to vote on election day
- You are required to show identification because you registered by mail, but you did not bring ID to the polling place on Election Day. In this instance, you must supply the County Clerk's office with acceptable identification by 7pm the Thursday following Election Day in order for your ballot to be counted. Acceptable forms of identification include: a current and valid photo ID; copy of a utility bill, bank statement, government check, or paycheck; or other government document that shows your name and local address. Bring it to the County Clerk's office at 1776 E Washington, Urbana.

Is there anything else I need to do?

- If you were required to show identification because you registered by mail, but you did not bring it to the polling place on Election Day; you must supply the County Clerk's office with acceptable ID showing your name and local address by 7pm on the Thursday following the election.
- If you have any information, identification or documents (e.g. receipt from the Secretary of State's office, copy of a deputy registrar form) to show that you are a registered voter or eligible to vote, please provide it to the election judges on Election Day or bring it to the County Clerk's office by 7:00pm the Thursday following the election.
- Call 217-384-3724 if you have any questions.

How will I know if my vote is counted?

- Visit our website at www.champaigncountyclerk.com, starting two weeks after the election. If your ballot was not counted, you may also learn the reason why it was not counted.
- Or call the County Clerk's office at 217-384-3724.
- You will be asked for your unique number which can be found on your copy of the affidavit given to you at the polling place.

Instructions for First Time Voters who Registered by NVRA form

If you are a first time voter and registered to vote using an NVRA (“motor voter”) form you will be required to present identification at the polling place before voting. Only one (1) piece of acceptable identification is required.

What forms of identification are acceptable? (10 ILCS 5/1A-16)

Acceptable forms of identification include:

- a current and valid photo ID;
- a current utility bill, bank statement, government check, paycheck, or other government document that shows your name and address.

What happens if I cannot present identification when I vote?

If you cannot present acceptable identification at the polling place, you will be allowed to cast a Provisional Ballot. Your Provisional Ballot will not count unless you provide identification to the County Clerk’s Office.

After casting your Provisional Ballot, you have until 7:00pm on the Thursday following Election Day to provide acceptable identification to the County Clerk’s Office.

I am concerned that my rights have been violated, who do I contact?

- **Mark Shelden**
Champaign County Clerk
1776 East Washington Street
Urbana, IL 61802
(217) 384-3724
mail@champaigncountyclerk.com
- **Illinois State Board of Elections**
1020 South Spring Street
Springfield, IL 62708
(217) 782-4141
webmaster@elections.state.il.us

ABSENTEE VOTING INFORMATION

Two Ways to Vote Absentee:

★ **In person** in the Champaign County Clerk's Office at 1776 E. Washington, Urbana before election day.

Or

★ You may request a ballot by mail.

In person voting is available currently through November 3, 2008, between 8:00am and 4:30pm, Monday through Friday. The County Clerk's Office will also be open on Saturday, November 1, 2008 between 9am and 12pm and on Monday, November 3, 2008 until 5pm for absentee voting.

The last day the County Clerk's Office will accept an application for an absentee ballot by mail is **October 30, 2008**. Applications for absentee ballots may be obtained from the Champaign County Clerk's Office, 1776 E. Washington, Urbana, IL 61802, by calling **384-3724** or online at www.champaigncountyclerk.com

When applying for an absentee ballot you will first be sent a ballot application. You must fill out the application and return it to the County Clerk's Office in order for us to be able to mail you the absentee ballot. Therefore, we suggest that you make your request well in advance of the election in order to ensure that your ballot is received by us in time to be counted.

Absentee voting is permitted under the following circumstances:

- ★ If you expect to be absent from the county on election day.
- ★ If you are physically incapacitated.
- ★ If you are a voter observing a religious holiday.
- ★ If you are serving as an election official, whose duties will prohibit you from voting in person.
- ★ If you are enlisted with the military or merchant marine.
- ★ If you are a state or federal employee living elsewhere due to state or federal employment.
- ★ If you are serving as a sequestered juror on a State or Federal jury.
- ★ If you are temporarily residing outside the United States.
- ★ If you are residing outside of the country, not registered to vote but qualified to vote in a federal election, you may vote by absentee ballot for federal offices only.

Also available to registered voters who are **permanently** disabled and unable to leave their homes is the Incapacitated Voter Program.

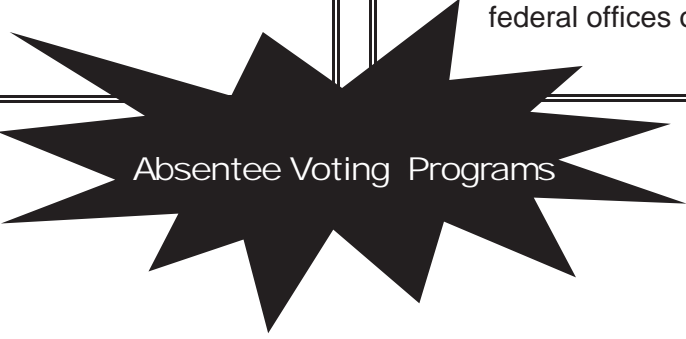
These voters may register with our program and will automatically receive an application for an absentee ballot through the mail for a period of 5 years at a time. A doctor's signature is required. Please call the County Clerk's office at 384-3724 for instructions on how to participate in this program.

Available to **students** who are registered voters in Champaign County and live part of the year

outside of Champaign County is the Absentee Student Program. In this program students will be automatically sent an application for an

absentee ballot for a period of 2 years. Please call the County Clerk's office at 384-3724 for instructions on how to participate in this program.

Both of these programs require that a voter enroll well in advance of an election. If immediate enrollment is not possible, voters in both of these situations are eligible to receive absentee ballots under the regular rules of absentee voting above.



Absentee Voting Programs

Accessibility at the Polling Place

Options for persons with special physical needs are increasing. At the March 21, 2006 General Primary Election, we introduced the new AutoMark Voter Assistance Terminal to the voter's of Champaign County as part of our efforts to make voting more accessible to every voter. This system uses touch screen technology to mark the optical scan ballot for the voter. The ballot is then placed in the ballot tabulator. The AutoMark allows voters with disabilities and other special needs to vote independently with privacy.



As part of the Help America Vote Act Champaign County has received grants to improve the accessibility of our 117 polling places. Voters wishing assistance in casting a ballot may bring someone with them other than the voter's employer or agent of that employer or an agent of the voter's union. An affidavit will be required and the person providing the assistance will have to sign an oath of assistance. The voter may choose to be assisted by two election judges - one judge from each political party.

For the visually impaired, the AutoMark offers the ability to enlarge the ballot as well as change the contrast for better visibility. In addition it has an audio component which can be used with earphones and a keypad which includes Braille. The AutoMark also supports Sip-N-Puff and paddle technology.

A discussion on how to better serve the needs of voters with special physical needs is included in the Champaign County Election Judge schools. Instruction is given on how to use the equipment and materials provided in the polling place supplies

Early Voting by Personal Appearance



Early Voting for the General Election for all Champaign County Precincts will be conducted, pursuant to Article 19A of the Illinois Election Code at the Office of the Champaign County Clerk at 1776 E. Washington in Urbana beginning on Monday, October 13th and continuing through Thursday, October 30. See page 4 for voting hours.

Any voter validly registered in Champaign County may vote at the County Clerk's office during the early voting period after showing proper identification, however, any vote cast is final, and may not be revoked, and the voter is not eligible to cast a vote on election day.

An absentee/early applicant's identity must be verified by presentation of an IL driver's license, IL ID card, or another government issued ID containing the applicant's photograph. If the person is a first time voter required to show ID, the acceptable forms of ID include: a current and valid photo ID, a current utility bill, bank statement, government check, paycheck, or other government document that shows name and address. A voter registration card is not acceptable identification.

Frequently Asked Questions and Other Election Day Information

What is a precinct and how does it relate to a polling place?

A precinct is a township or a sub-division of a township. For example, Ayers Township is also a precinct, but larger townships such as Champaign Township have multiple precincts such as Champaign 1-7.

What is the difference between Cunningham Township and Urbana Township or Champaign Township and City of Champaign Township?

Cunningham Township includes all the precincts within the city of Urbana. Urbana Township includes areas adjacent to the City of Urbana but that are outside of the city limits. The City of Champaign Township includes all the precincts within the City of Champaign. Champaign Township includes areas adjacent to the City of Champaign but that are outside of the city limits as well as portions of the Village of Savoy. Some voters are in the municipality at the City of Champaign, but in Champaign Township.

There is a polling place in the building where I work, can I vote there?

Not unless you live in that precinct. All voters must vote in the polling place in the precinct where they live. Your polling place is listed on your voter identification card. You can also check our web site to determine your polling place.

I've lost my voter identification card, do I need to present it when I vote?

No, you do not need to show your voter identification card in order to vote. If you are properly registered, your name will appear on the list of registered voters in that precinct. Some first time voters will be required to show identification if they did not provide identification at the time of registration.

When is the last day I can register to vote or update my current registration in order to be eligible to vote in this election?

October 7th is the last day you can register or update your address prior to this election.

I moved 6 months ago and did not update my voter registration, can I vote?

No, even if you moved within the same precinct, you are required by law to update your voter registration in order to be able to vote. However, in a Federal Election, you can vote for federal candidates only in your old polling place.

If I change my name do I have to update my voter's registration?

Yes, if you change your name due to marriage or a legal name change you are required to re-register in order to be eligible to vote.

What if I don't receive my voter identification card?

You should receive a new card if you register or update your address or name. We also send out new cards if there is a change to the information on your card including a polling place change. If you do not receive an identification card within two weeks of registering or updating your information, call our office at 384-3724.

I think I registered to vote, but I'm not sure. How can I find out?

You may check your voter registration on our web site at www.champaigncountyclerk.com or by calling our office at 384-3724.

I'm not sure I updated my voter registration when I moved. How can I find out?

You may check your voter registration on our web site at www.champaigncountyclerk.com or by calling our office at 384-3724.

How do I become an election judge?

You may call our office at 384-3724, complete and mail in the form on page 8 of this guide or apply online at www.champaigncountyclerk.com

Is campaigning allowed inside and/or outside the polling place and what is considered campaigning?

Campaigning is allowed 100 feet from the entrance to the room in which voting is taking place. Within that 100 feet no campaigning is allowed. Campaigning includes signs, flyers and/or brochures, t-shirts and/or buttons or discussion concerning a candidate, political party or proposition which is on the ballot.

I've heard that some voters will be asked to show identification at the polling place before they will be allowed to vote. Will I be one of those voters and what kind of identification is acceptable?

First time voters who registered by mail, at a voter registration Kiosk or on a white NVRA form must vote in person the first time and may need to show ID.

Acceptable forms of identification include:

- a current and valid photo ID;
- a current utility bill, bank statement, government check, paycheck, or other government document that shows your name and address.

I am a first time voter living in a University of Illinois Residence Hall and I do not have any of the forms of identification listed above, what can I use?

Registered voters who live in University of Illinois Residence Halls may bring a print out of their Move-In Notice which is available by logging onto Visit My Housing at www.housing.uiuc.edu.

May I assist my daughter or son who is voting for the first time?

No, only persons with a physical disability or who are illiterate or do not speak English may be assisted while voting. The election judges in your precinct will be happy to demonstrate the voting equipment to your first time voter before they go into the voting booth.

I am in the U.S. Military. Can I vote?

Yes. Any member of the U.S. Armed Forces while on active duty and otherwise qualified to vote may vote in person or by absentee ballot without being registered to vote in Champaign County. Additional information is available online at www.champaigncountyclerk.com

How can I obtain an absentee ballot?

Voters must first request an application for absentee ballot by calling our office at 384-3724, by visiting our office, going to www.champaigncountyclerk.com, or by mail at 1776 E. Washington Street, Urbana IL 61802. Absentee voting begins 40 days before an election. October 30, 2008 is the last day the County Clerk's Office may accept an application for an absentee ballot by mail for this election. An individual may vote absentee in person in the County Clerk's office up to and including the day before the election - November 3, 2008.

How can I find out who is running for office in my area?

You can check our web site (www.champaigncountyclerk.com) to find out which districts you live in and to view your sample ballot. A list of candidates for the entire county can also be found on pages 18-29 of this guide. You may also call or visit our office.

Why do some voters in my precinct have a different ballot than mine?

There are many precincts that are "split" by a voting district such as a state legislative district. For example, half of one precinct may be in the 103rd Representative District and the other half may be in the 105th Representative District thereby creating at least two different ballots for that precinct. Precincts can also be "split" by other districts such as school boards districts, county board districts, city council districts, ward districts, library districts, and park districts.

Why do the election judges in the precinct where I vote announce my name and address aloud?

Election judges are required by state statute to announce each voter's name and address aloud so that all present in the polling place can hear.

Candidates

General 2008

Champaign County

Auditor

Vote For Up To 1

Champaign County

Tony Fabri	308 N Edwin St	Champaign	61821
Four Year Term	Democratic		
Campaign/Contact Phone	tonyfabri@hotmail.com		

Brad Jones	3105 Amy Dr	Champaign	61822
Four Year Term	Republican		
Campaign/Contact Phone			

Circuit Clerk

Vote For Up To 1

Champaign County

Kimberly Hooper	1907 Juniper Dr	Mahomet	61853
Four Year Term	Democratic		
Campaign/Contact Phone	kim-hooper@hotmail.com		

Linda S. Frank	1113 Mayfair Rd	Champaign	61821
Four Year Term	Republican		
Campaign/Contact Phone	info@lindasfrank.com	www.lindasfrank.com	

Coroner

Vote For Up To 1

Champaign County

Mark C. Medlyn	4007 Crail Rd	Champaign	61822
Four Year Term	Democratic		
Campaign/Contact Phone			

Duane Northrup	1202 E White Oak Rd	Mahomet	61853
Four Year Term	Republican		
Campaign/Contact Phone	dcmpk5@earthlink.net		

Recorder of Deeds**Vote For Up To 1**

Champaign County

Danis Pelmore

304 Foxwell Ct

Champaign

61820

Four Year Term

Democratic

Campaign/Contact Phone

Barbara A. Frasca

3305 Springview Ln

Champaign

61822

Four Year Term

Republican

Campaign/Contact Phone

State's Attorney**Vote For Up To 1**

Champaign County

Julia R. Rietz

3016 Wynstone Dr

Champaign

61822

Four Year Term

Democratic

Campaign/Contact Phone

juliarietz@myway.com

Janie Miller-Jones

700 Oakcrest Dr

Rantoul

61866

Four Year Term

Republican

Campaign/Contact Phone

(217) 893-1053

janiemiller2000@yahoo.com

County Board Member**Vote For Up To 2**

County Board District 1

Eric Thorsland

480 County Road 2500 N

Mahomet

61853

Four Year Term

Democratic

Campaign/Contact Phone

Scott Hays

564 A County Road 2400 N

Dewey

61840

Four Year Term

Democratic

Campaign/Contact Phone

John D. Jay

302 W Main St

Mahomet

61853

Four Year Term

Republican

Campaign/Contact Phone

jjay@mchsi.com

Lawrence D. Sapp

311 Ridge Rd

Mahomet

61853

Four Year Term

Republican

Campaign/Contact Phone

(217) 202-6405

arr2ff526@aol.com

County Board Member**Vote For Up To 1**

County Board District 2

Ron Bensyl

304 W Main St

Royal

61871

Four Year Term

Republican

Campaign/Contact Phone

ronb@direcway.com

County Board Member**Vote For Up To 1**

County Board District 3

Margaret Wright

24 Fields East

Champaign

61822

Four Year Term

Democratic

Campaign/Contact Phone

Alan Nudo

2001 Byrnebruk Dr

Champaign

61822

Four Year Term

Republican

Campaign/Contact Phone

County Board Member**Vote For Up To 1**

County Board District 4

Stanley S. (Steve) O'Connor

1151 County Road 1800 E

Urbana

61802

Four Year Term

Republican

Campaign/Contact Phone

County Board Member**Vote For Up To 2**

County Board District 5

Carol C. Ammons

1108 N Busey Ave

Urbana

61801

Four Year Term

Democratic

Campaign/Contact Phone

carolammons@gmail.com

Lloyd Carter, Jr.

810 W Fairview Ave

Urbana

61801

Four Year Term

Democratic

Campaign/Contact Phone (217) 778-9771

William Kyles

408 Taylor Thomas Ln

Champaign

61820

Four Year Term

Republican

Campaign/Contact Phone

Corben Rice

1406 N Harris Ave

Champaign

61820

Four Year Term

Republican

Campaign/Contact Phone

County Board Member**Vote For Up To 1**

County Board District 6

Giraldo Rosales

618 W Hill St

Champaign

61820

Four Year Term

Democratic

Campaign/Contact Phone (217) 766-6109

County Board Member**Vote For Up To 1**

County Board District 6

Michael Richards

409 W Columbia Ave Apt 2

Champaign

61820

Two Year Unexpired Term

Democratic

Campaign/Contact Phone

mcrchrds@hotmail.com

County Board Member**Vote For Up To 2**

County Board District 7

Janet Anderson

1911 McDonald Dr

Champaign

61821

Four Year Term

Democratic

Campaign/Contact Phone (217) 356-2433

jaba@insightbb.com

C. Pius Weibel

709 W Green St

Champaign

61820

Four Year Term

Democratic

Campaign/Contact Phone

weibel@uiuc.edu

Walter Pituc

1107 S 2nd St Apt 29

Champaign

61820

Four Year Term

Green

Campaign/Contact Phone

votewalter@gmail.com

www.votewalter.org

Stephanie Dold

911 S Locust St, Apt 301

Champaign

61820

Four Year Term

Republican

Campaign/Contact Phone

sdold2@uiuc.edu

Tony Pomonis

802 W Springfield Ave #1

Champaign

61820

Four Year Term

Republican

Campaign/Contact Phone

apomonis@gmail.com

County Board Member

Vote For Up To 1

County Board District 8

Samuel Jay Smucker

412 W Washington St

Urbana

61801

Four Year Term

Democratic

Campaign/Contact Phone

sam@smuckerforcountyboard.com

www.smuckerforcountyboard.com

Joe Futrelle

1205 S Race St

Urbana

61801

Four Year Term

Green

Campaign/Contact Phone

(217) 328-7853

joe@joefutrelle.org

www.joefutrelle.org

County Board Member

Vote For Up To 1

County Board District 9

Brendan M. McGinty

805 E Shurts St

Urbana

61801

Four Year Term

Democratic

Campaign/Contact Phone

(217) 328-1994

brendan@mcgintyzone.com

www.votemcginty.com

Mike Lehman

608 E Green St

Urbana

61802

Four Year Term

Green

Campaign/Contact Phone

Judicial Candidates Seeking Retention in Office

Vote on the Proposition with respect to all or any of the Judges listed on the ballot. No Judge listed is running against any other Judge. The sole question is whether each Judge shall be retained in his present office. Shall each of the persons listed be retained in office?

4th Judicial District

Judge of the Appellate Court

Sue E. Myerscough

Yes

No

6th Judicial Circuit

Circuit Judge

Thomas J. Difanis

Yes

No

Harry E. Clem

Yes

No

Arnold F. Blockman

Yes

No

Katherine (Kitty) McCarthy

Yes

No

A. G. Webber

Yes

No

State of Illinois

State Senator

Vote For Up To 1

53rd State Legislative District

Dan Rutherford

13266 East 950 North Rd

Chenoa

61726

Four Year Term

Republican

Campaign/Contact Phone

Representative in the General Assembly

Vote For Up To 1

103rd State Representative District

Naomi D. Jakobsson

803 W Main St

Urbana

61801

Two Year Term

Democratic

Campaign/Contact Phone

Frank Calabrese

310 E Gregory Dr

Champaign

61820

Two Year Term

Republican

Campaign/Contact Phone

Representative in the General Assembly

Vote For Up To 1

104th State Representative District

Lori A. DeYoung

108 S Jackson

Fithian

61844

Two Year Term

Democratic

Campaign/Contact Phone

William B. "Bill" Black

31 Highland Shore Dr

Danville

61832

Two Year Term

Republican

Campaign/Contact Phone

Representative in the General Assembly

Vote For Up To 1

105th State Representative District

Shane Cultra

400 N Poplar St

Onarga

60955

Two Year Term

Republican

Campaign/Contact Phone

Representative in the General Assembly

Vote For Up To 1

110th State Representative District

Chapin Rose

1410 Heather Dr

Mahomet

61853

Two Year Term

Republican

Campaign/Contact Phone

United States Senator

Vote For Up To 1

Federal Ballot

Richard J. Durbin

1525 S Bates Ave

Springfield

62704

Six Year Term

Democratic

Campaign/Contact Phone

Kathy Cummings

Six Year Term

Green

Campaign/Contact Phone

Steve Sauerberg

6330 Wesley Rd

Willowbrook

60527

Six Year Term

Republican

Campaign/Contact Phone

Larry A. Stafford

Six Year Term

Libertarian

Campaign/Contact Phone

Chad N. Koppie

Six Year Term

Constitution

Campaign/Contact Phone

Representative in Congress

Vote For Up To 1

Federal Ballot

Steve Cox

507 W Main St

Urbana

61801

Two Year Term

Democratic

Campaign/Contact Phone

Timothy V. Johnson

413 Beringer Cr

Urbana

61802

Two Year Term

Republican

Campaign/Contact Phone

Deadline to Register to Vote:

Tuesday, October 7, 2008

VOTE. Your Right, Your Responsibility.

Referenda

Champaign County

Question Of Imposing A Retailers' Occupation Tax And A Service Occupation Tax For School Facility Purposes

"Shall Champaign County be authorized to impose a retailers' occupation tax and a service occupation tax (commonly referred to as a "sales tax") at a rate of one percent (1%) to be used exclusively for school facility purposes?"

YES

NO

Cornbelt Fire Protection District

Increase Number Of Trustees

"Shall the number of trustees of the Cornbelt Fire Protection District be increased from 3 to 5?"

YES

NO

Champaign County Forest Preserve District

Proposition To Increase The Limiting Rate

Shall the limiting rate under the Property Tax Extension Limitation Law for the Champaign County Forest Preserve District, Champaign County, Illinois, be increased by an additional amount equal to .02% above the limiting rate for levy year 2007 and be equal to .0919% of the equalized assessed value of the taxable property therein for levy year 2008?

YES

NO

(1) The approximate amount of taxes extendable at the most recently extended limiting rate is \$2,397,810, and the approximate amount of taxes extendable if the proposition is approved is \$3,064,794.

(2) For the 2008 levy year the approximate amount of the additional tax extendable against property containing a single family residence and having a fair market value at the time of the referendum of \$100,000 is estimated to be \$6.67.

(3) If the proposition is approved, the aggregate extension for 2008 will be determined by the limiting rate set forth in the proposition, rather than the otherwise applicable limiting rate calculated under the provisions of the Property Tax Extension Limitation Law (commonly known as the Property Tax Cap Law).

State of Illinois

Proposed Call For A Constitutional Convention

This proposal deals with a call for a state constitutional convention. The last such convention was held in 1969-70, and a new Constitution was adopted in 1970. The 1970 Illinois Constitution requires that the question of calling a convention be placed before the voters every 20 years. In 1988 the electors rejected the call for a constitutional convention with 75% voting against calling a convention, and 25% voting in favor of calling a convention. If you believe the 1970 Illinois Constitution needs to be revised through the convention process, vote "YES" on the question of calling a constitutional convention. If you believe that a constitutional convention is not necessary, or that changes can be accomplished through other means, vote "NO" on the calling of a constitutional convention.

YES

NO

For the calling of a Constitutional Convention.

City of Champaign Township

Proposition To Increase The Limiting Rate

Shall the limiting rate under the Property Tax Extension Limitation Law for City of Champaign Township be increased by an additional amount equal to .02% above the limiting rate for levy year 2007 and be equal to .0550% of the equalized assessed value of the taxable property therein for levy year 2008?

YES

NO

(1) The approximate amount of taxes extendable at the most recently extended limiting rate is \$482,723 and the approximate amount of taxes extendable if the proposition is approved is \$779,597.

(2) For the 2007 levy year, the approximate amount of the additional tax extendable against property containing a single-family residence and having a fair market value at the time of the referendum of \$100,000 is estimated to be \$6.67.

(3) If the proposition is approved, the aggregate extension for 2008 will be determined by the limiting rate set forth in the proposition, rather than the otherwise applicable limiting rate calculated under the provisions of the Property Tax Extension Limitation Law (commonly known as the Property Tax Cap Law).

City of Champaign Township

Proposition To Post All Contracts And Itemized Expenses On Their Websites

Shall the voters of the City of Champaign Township ask the Town of the City of Champaign Township and City of Champaign to post all contracts and itemized expenses on their websites so that taxpayers can see how their money is being spent? **YES**
NO

Cunningham Township

Resolution To Place An Advisory Referendum Question Concerning The System Of Elections

"Do you support keeping the current system for local elections so that each voter casts one vote for the candidate they prefer and the candidate who gets the most votes wins?" **YES**
NO

Resolution To Place An Advisory Referendum Question Concerning Restricting The Use Of Cell Phones While Driving, Bicycling Or By Pedestrians Crossing Streets

"Do you support restrictions on the use of cell phones by drivers and bicyclists using public streets and by pedestrians crossing streets so they will not become so distracted by cell phone use that they are a danger to themselves and others?" **YES**
NO

Resolution To Place An Advisory Referendum Question Concerning Health Care

"Do you support national legislation to provide basic health care for all Americans while containing costs through the reduction of bureaucracy and while preserving the doctor-patient relationship, patient choice of doctors, and doctors' choice of their practice settings?" **YES**
NO

Congress shall make no law respecting an establishment of religion, or prohibiting the free exercise thereof; or abridging the freedom of speech, or of the press; or the right of the people peaceably to assemble, and to petition the Government for a redress of grievances.

First Amendment to the Constitution of the United States of America

Compromise, Harwood, Kerr Assessment District

Proposition To Increase The Limiting Rate

Shall the limiting rate under the Property Tax Extension Limitation Law for the Compromise, Harwood and Kerr Multi-Township Assessment District, Champaign County, Illinois, be increased by an additional amount equal to 41% above the limiting rate for levy year 2007 and be equal to .0482% of the equalized assessed value of the taxable property therein for all future levy years?

YES

NO

(1) The approximate amount of taxes extendable at the most recently extended limiting rate is \$12,750.00, and the approximate amount of taxes extendable if the Proposition is approved is \$18,000.00.

(2) For the 2009 levy year the approximate amount of the additional tax extendable against property containing a single family residence and having a fair market value at the time of the referendum of \$100,000.00 is estimated to be \$4.70.

(3) If the proposition is approved, the aggregate extension for 2009 and thereafter will be determined by the limiting rate set forth in the proposition, rather than the otherwise applicable limiting rate calculated under the provisions of the Property Tax Extension Limitation Law (commonly known as the Property Tax Cap Law).

SUGGESTIONS

Many of our new initiatives, including the Voter Guide, were the result of suggestions by concerned citizens like you. If you would like to pass on an idea to our office feel free to fill out this form or email us at suggestions@champaigncountyclerk.com

Name (optional) _____

Address (optional) _____

City (optional) _____

Suggestion _____

Polling Places

Ayers

Longview-Broadlands Firehouse
107 S Lincoln
Broadlands, IL 61816

Brown Fisher

Fisher Town Hall
104 W Front
Fisher, IL 61843

Brown Fooseland

Fooseland Fire Station
205 Main St
Fooseland, IL 61845

Champaign 1

Garden Hills Baptist Church
1601 Bloomington Rd
Champaign IL 61821

Champaign 2

Alan G. Ryle Companies
4102 Belmont Point
Champaign IL 61822

Champaign 3

Windsor Rd. Christian Church
2501 W Windsor Rd
Champaign IL 61822

Champaign 4

Windsor Rd. Christian Church
2501 W Windsor Rd
Champaign IL 61822

Champaign 5

First Baptist Church of Champaign
East Entrance
Burwash & Prospect
Savoy IL 61874

Champaign 6

First Baptist Church of Champaign
East Entrance
Burwash & Prospect
Savoy IL 61874

Champaign 7

Savoy Recreation Center
402 W Graham Dr
Savoy IL 61874

City of Champaign 1

Douglass Center Annex
804 N Fifth St
Champaign, IL 61820

City of Champaign 2

Illini Union Pine Lounge
1401 W Green St
Urbana IL 61801

City of Champaign 3

Illini Union Pine Lounge
1401 W Green St
Urbana IL 61801

City of Champaign 4

University YMCA
1001 S Wright St
Champaign IL 61820

City of Champaign 5

Snyder Hall Lounge
206 E Peabody
Champaign IL 61820

City of Champaign 6

Stratton Elementary School
Northwest Entrance 1st door
Closest to Street
902 N Randolph
Champaign, IL 61820

City of Champaign 7

Skelton Place Community Room
302 S 2nd St
Champaign, IL 61820

City of Champaign 8

Rehabilitation Education Ctr.
1207 S Oak
Champaign IL 61820

City of Champaign 9

IL Employment and Training Ctr.
1307 N Mattis
Champaign, IL 61821

City of Champaign 10

Stratton Elementary School
Northwest Entrance 1st Door
Closest to Street
902 N Randolph
Champaign IL 61820

City of Champaign 11

Holy Cross Parish Center
West Entrance
405 W Clark
Champaign IL 61820

City of Champaign 12

Holy Cross Parish Center
West Entrance
405 W Clark
Champaign IL 61820

City of Champaign 13

E.H. Mellon Adm. Ctr.
703 S New
Champaign IL 61820

City of Champaign 14

E.H. Mellon Adm. Ctr.
703 S New
Champaign IL 61820

City of Champaign 15

Faith Methodist Church
South Entrance
1719 S Prospect Ave
Champaign IL 61821

City of Champaign 16

Good Shepherd Lutheran Church
North Entrance
2101 S Prospect Ave
Champaign IL 61821

City of Champaign 17

Garden Hills Baptist Church
1601 Bloomington Rd
Champaign IL 61821

City of Champaign 18

Farm Bureau
801 Country Fair Dr
Champaign IL 61821

City of Champaign 19

Salvation Army Corps
502 N Prospect
Champaign IL 61820

City of Champaign 20

Grace Lutheran Church
313 S Prospect Ave
Champaign IL 61821

City of Champaign 21

St. Peter's United Church of Christ
Main Entrance (not side)
905 S Russell
Champaign IL 61821

City of Champaign 22

Hessel Pk. Christian Reformed
Church
East Entrance
700 W Kirby
Champaign IL 61820

City of Champaign 23

Faith Methodist Church
South Entrance
1719 S Prospect Ave
Champaign IL 61821

City of Champaign 24

Good Shepherd Lutheran Church
North Entrance
2101 S Prospect Ave
Champaign IL 61821

City of Champaign 25

Hays Center
1311 W Church
Champaign IL 61821

City of Champaign 26

St. John's Lutheran Church
Mattis Entrance
509 S Mattis Ave
Champaign IL 61821

City of Champaign 27

Champaign Church of Christ
South Entrance
1509 W John
Champaign IL 61820

City of Champaign 28

Champaign Church of Christ
South Entrance
1509 W John
Champaign IL 61821

City of Champaign 29

Westminster Presbyterian
Church/Montessori School
1700 Crescent Dr
Champaign IL 61821

City of Champaign 30

St. John's Lutheran Church
Mattis Entrance
509 S Mattis Ave
Champaign IL 61821

City of Champaign 31

Leonhard Recreation Center
Main Entrance
2112 Sangamon
Champaign IL 61821

City of Champaign 32

Free Methodist Church
1913 S Mattis Ave
Champaign IL 61821

City of Champaign 33

Meadowbrook Community Church
Front Entrance
1902 S Duncan Rd
Champaign IL 61821

City of Champaign 34

Parkland College Theater Lobby
Use Parking Lot C
2400 W Bradley Ave
Champaign IL 61821

City of Champaign 35

Bresnan Meeting Center
706 Kenwood Rd
Champaign IL 61821

City of Champaign 36

Stratford Park Bible Chapel
2801 W Kirby
Champaign IL 61821

City of Champaign 37

Carpenters' Local No. 44
402 S Duncan Rd
Champaign IL 61821

City of Champaign 38

Meadowbrook Community Church
Front Entrance
1902 S Duncan Rd
Champaign IL 61821

Colfax

Colfax Town Hall
900N on Road 200E
Ivesdale, IL 61851

Compromise Gifford

Gifford Community Bldg
101 S Main
Gifford, IL 61847

Compromise Penfield

I & I Antique Tractor Club
401 Busey
Penfield IL 61862

Condit

River Valley Church of Christ
Rt 136 and Pickett
Fisher, IL 61843

Crittenden

Pesotum Community Building
103 E Lincoln
Pesotum, IL 61863

Cunningham 1

Mt. Olive Baptist Church
808 E Bradley Ave
Champaign, IL 61801

Cunningham 2

Daniels Graduate Hall
1010 W Green St
Urbana IL 61801

Cunningham 3

Illinois St. Residence Hall
1010 W Illinois
Urbana IL 61801

Cunningham 4

Lincoln Ave. Residence Hall Lounge
1005 S Lincoln Ave
Urbana IL 61801

Cunningham 5

Pennsylvania Ave. Residence Hall
906 W College
Urbana IL 61801

Cunningham 6

Vineyard Church
South Entrance
1500 N Lincoln Ave
Urbana IL 61801

Cunningham 7
First Presbyterian Church
Handicap East Entrance
602 W Green St
Urbana, IL 61801

Cunningham 8
First Presbyterian Church
Handicap East Entrance
602 W Green St
Urbana IL 61801

Cunningham 9
Twin City Bible Church
810 W Michigan
Urbana IL 61801

Cunningham 10
Urbana Free Library
Race St or Green St Entrance
210 W Green St
Urbana IL 61801

Cunningham 11
Urbana City Building
400 S Vine
Urbana IL 61801

Cunningham 12
Urbana City Building
400 S Vine
Urbana IL 61801

Cunningham 13
Pennsylvania Ave. Baptist Church
Handicap North Entrance
600 E Pennsylvania Ave
Urbana IL 61801

Cunningham 14
Clark-Lindsey Village
Main Entrance
101 W Windsor Rd
Urbana IL 61801

Cunningham 15
Church of Christ
2601 S Philo Rd
Urbana IL 61802

Cunningham 16
Pennsylvania Ave. Baptist Church
Handicap North Entrance
600 E Pennsylvania Ave
Urbana IL 61801

Cunningham 17
Urbana Civic Center
108 E Water St
Urbana, IL 61801

Cunningham 18
Urbana-Champaign Friends
Meeting House
1904 E Main
Urbana IL 61802

Cunningham 19
Sunnycrest Mall
1717 Philo Rd
Urbana IL 61801

Cunningham 20
Sunnycrest Mall
1717 Philo Rd
Urbana, IL 61801

Cunningham 21
Steer Place Community Room
1202 E Harding
Urbana IL 61801

Cunningham 22
Grace Methodist Church
2004 Philo Rd
Urbana IL 61802

Cunningham 23
St. Matthew's Lutheran Church
2200 Philo Rd
Urbana IL 61802

East Bend
Dewey Community Building
9 Main
Dewey IL 61840

Harwood
Gifford Community Bldg
101 S Main St
Gifford IL 61847

Hensley
Hensley Town Hall
SW Corner of Hensley Rd & 900E
Champaign IL 61822

Kerr
I & I Antique Tractor Club
401 Busey
Penfield IL 61862

Ludlow 1
Ludlow Community Ctr.
202 E Thomas
Ludlow IL 60949

Ludlow 2
St. Christopher Episcopal Church
1501 E Grove
Rantoul IL 61866

Ludlow 3
Bethany Park Christian Church
1401 E Grove
Rantoul IL 61866

Mahomet 1
Mahomet Area Community Ctr.
510 E Main Street
Mahomet IL 61853

Mahomet 2
Grace Church of Mahomet
800 W Oak
Mahomet IL 61853

Mahomet 3
Lake of the Woods
Pavilion No 1
Mahomet IL 61853

Mahomet 4
Lake of the Woods
Pavilion No 1
Mahomet IL 61853

Mahomet 5
Mahomet Nazarene Church
702 Turkey Farm Road
Mahomet IL 61853

Newcomb
Newcomb Town Hall
355 Co Rd 2700N
Mahomet IL 61853

Ogden 1
Masonic Lodge
111 East Ave
Ogden IL 61859

Ogden 2
Royal Town Hall
103 N Park
Royal IL 61871

Pesotum
Pesotum Community Building
103 E Lincoln
Pesotum IL 61863

Philo
Philo Town Hall
104 Harrison
Philo IL 61864

Rantoul 1
Rantoul Fire Station
204 N Kentucky
Rantoul IL 61866

Rantoul 2
Prairie Village
200 W International
Rantoul IL 61866

Rantoul 3
American Lutheran Church
500 Church Dr
Rantoul IL 61866

Rantoul 4
Thomasboro Fire Station
101 N Church St
Thomasboro IL 61866

Rantoul 5
Presbyterian Church
Rte 136 E, E Champaign Ave
Rantoul IL 61866

Rantoul 6
Rantoul Youth Center
1306 Country Club Lane
Rantoul IL 61866

Raymond
Raymond Twp. Town Hall
202 E Logan
Longview IL 61852

Sadorus Sadorus
Sadorus Village Hall
115 E Market
Sadorus IL 61872

Sadorus Ivesdale
Ivesdale Fire Station
406 Third
Ivesdale IL 61851

Scott Bondville
Bondville Village Hall
102 S Walnut
Bondville IL 61815

Scott Seymour
Seymour Meeting Center
112 N Main
Seymour IL 61875

Sidney
Sidney Town Hall
102 E Byron
Sidney IL 61877

Somer
Somer Township Building
5406 NW Arrowhead Drive
Urbana IL 61802

South Homer
Homer City Building
500 E 2nd St
Homer IL 61849

Stanton
Stanton Twp. Bldg. & Town Hall
NWCorner of Rds 2100N & 2100E
St. Joseph IL 61873

St. Joseph 1
St. Joseph Township Bldg.
400 W Sherman
St. Joseph IL 61873

St. Joseph 2
Living Word Fellowship Church
1000 Park Ave
St. Joseph IL 61873

Tolono 1
Tolono Town Hall
111 E Holden
Tolono IL 61880

Tolono 2
Savoy Recreation Center
402 W Graham Dr
Savoy IL 61874

Tolono 3
Tolono West Fire Station
507 W Strong
Tolono IL 61880

Urbana 1
Church of Christ
2601 S Philo Rd
Urbana IL 61802

Urbana 2
Carroll Fire Protection Dist. Bldg.
1811 Brownfield Rd
Urbana IL 61802

Urbana 3
Carroll Community Center
1210 Carroll Ave
Urbana IL 61802

Urbana 4
Edge-Scott Fire Department
201 Smith Rd
Urbana IL 61802

Mark Sheldon
Champaign County Clerk
1776 E Washington
Urbana, IL 61802



NONPROFIT
U.S. POSTAGE
PAID
PERMIT NO. 9
CHAMPAIGN, IL

Residential Customer